



Partner in global logistics

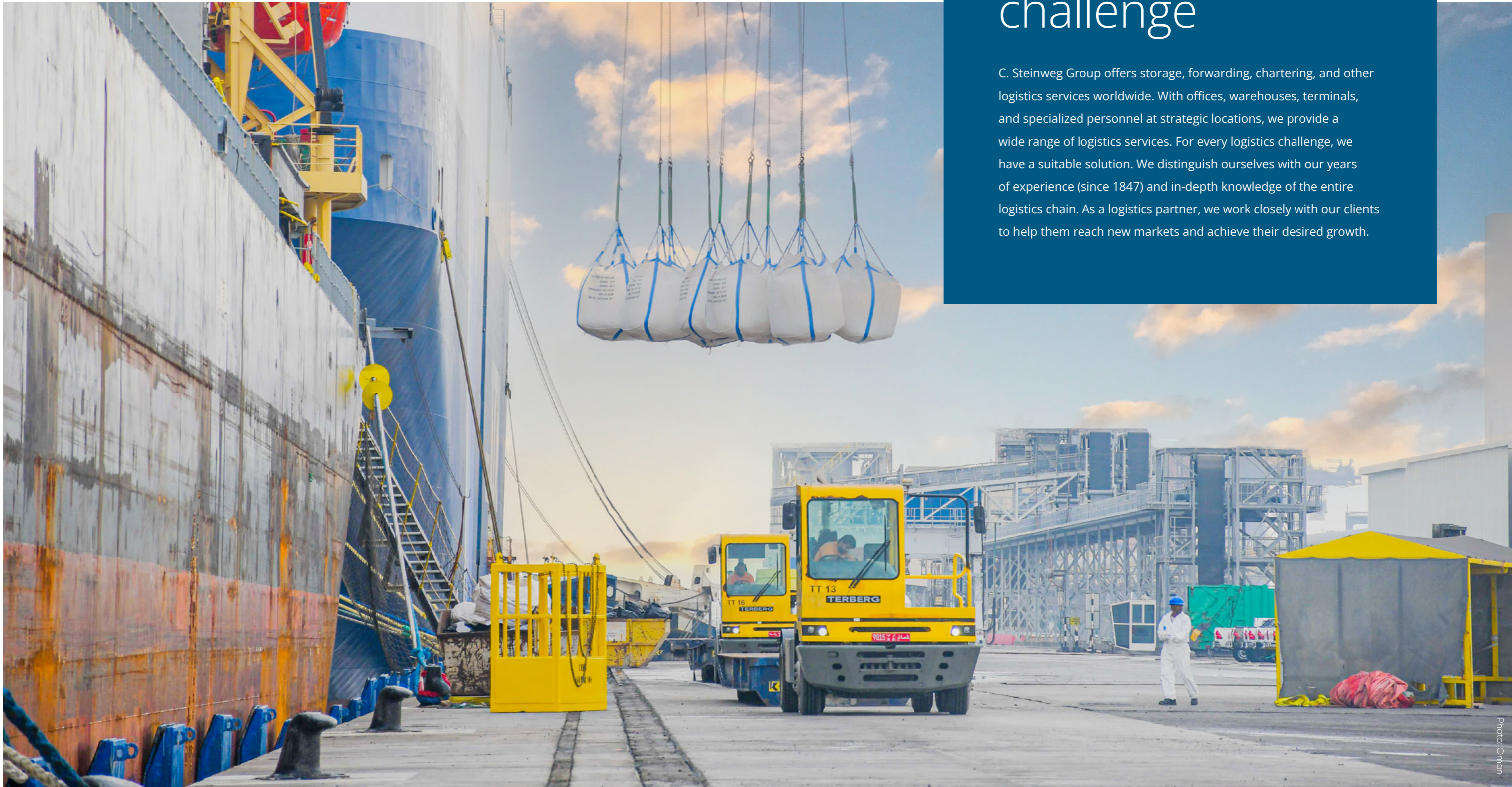
C. Steinweg Group corporate brochure



C. Steinweg Group

A custom solution for every logistics challenge

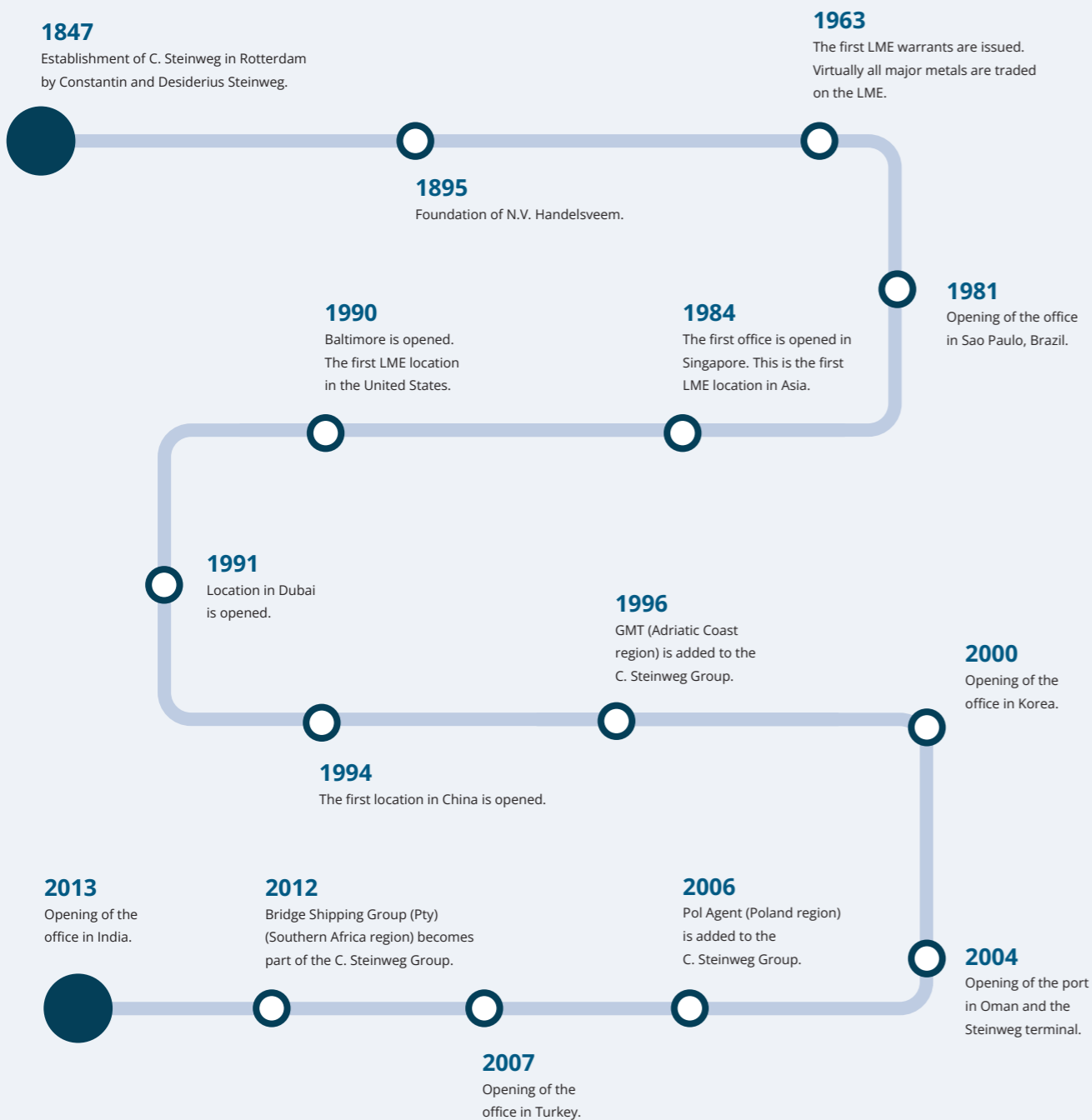
C. Steinweg Group offers storage, forwarding, chartering, and other logistics services worldwide. With offices, warehouses, terminals, and specialized personnel at strategic locations, we provide a wide range of logistics services. For every logistics challenge, we have a suitable solution. We distinguish ourselves with our years of experience (since 1847) and in-depth knowledge of the entire logistics chain. As a logistics partner, we work closely with our clients to help them reach new markets and achieve their desired growth.



How it all began

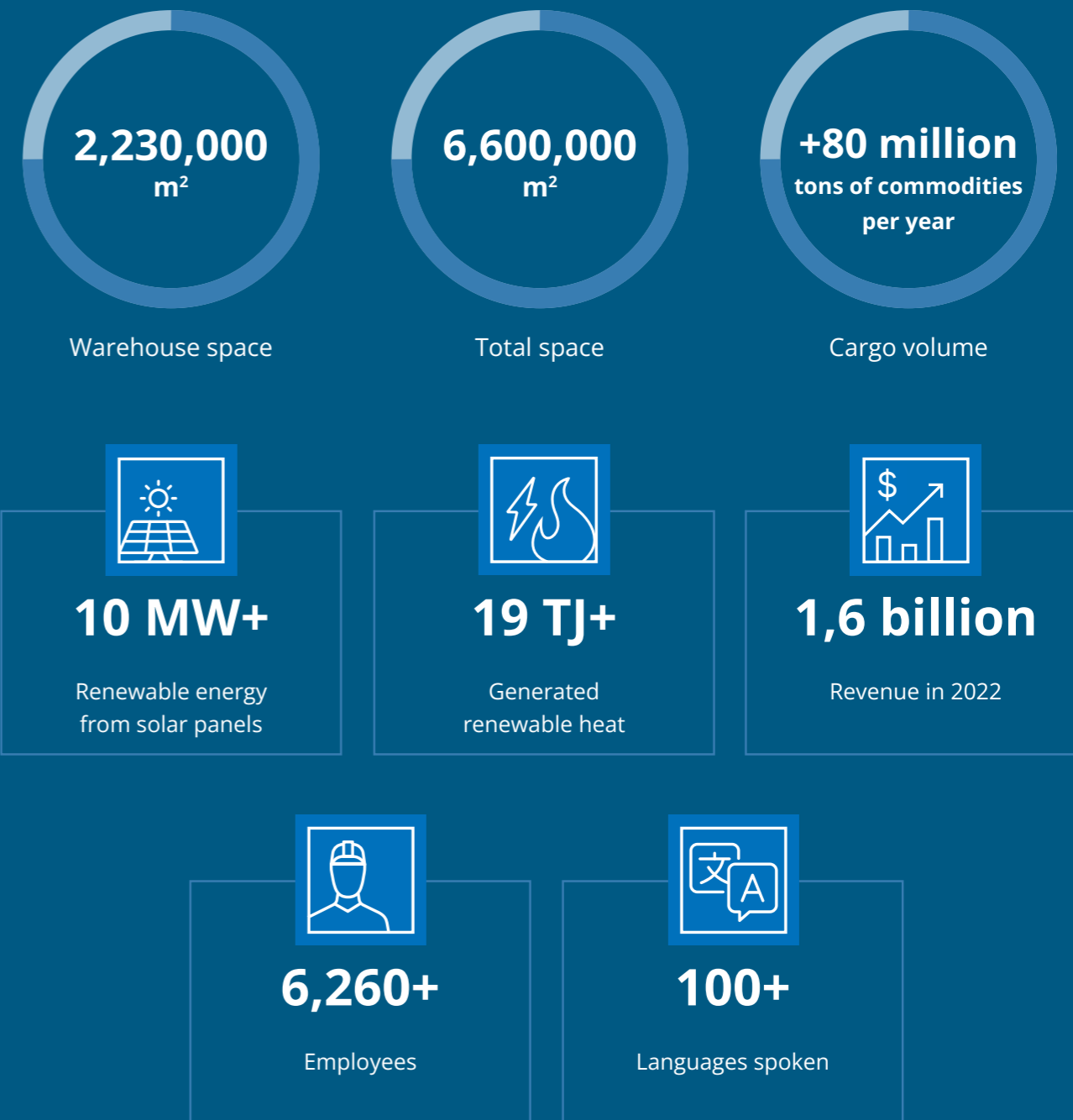
Steinweg has a long history, that dates back to 1847. Steinweg has since grown to become a global, market-leading partner in the commodity trade. We operate in over 55 countries with approximately 6,260

employees. The markets we operate in are constantly evolving, and to keep pace our services are continually evolving in response to international and local trends, changes, and customer needs.



Facts and figures

The scale and scope of our versatile logistics services can be expressed in various ways, including our terminals, the countries we operate in, and the goods we transport and store. These facts and figures provide a rough overview.



Global presence



Scan for the most current overview.



135+
Offices



55+
Countries

We have offices, warehouses, and terminals in strategic locations around the world. Clients can always count on our support and local knowledge anywhere they operate.

We collaborate with reliable partners worldwide, effectively leveraging our valuable network to provide comprehensive logistics solutions to our clients.

Each continent and country has its own rules and regulations, and we have extensive knowledge of local markets and opportunities.



Handling goods with care

Transporting, loading, and unloading goods is our core business. We are increasingly asked to process and manufacture products. The goods and products we handle range from metals, chemicals, and wood to cocoa, sugar, and tobacco. Each type has its unique characteristics and requires a customized approach.

At Steinweg, we have extensive in-house expertise with a large and versatile team of specialists who know how to handle goods with care and attention. Quality, safety, and sustainability are important focus areas for us.



Photos: Rotterdam



Scan for more information on our goods.

- Base Metals
- Bulk
- Cocoa
- Chemicals & Plastics
- Coffee
- Ferro Alloys
- Forest Products
- General Cargo
- Groundnuts/Treenuts
- Minor Metals
- Paper & Pulp
- Project Cargo
- Soft Commodities
- Spices/Coconut
- Steel
- Sugar
- Tea
- Tobacco
- Ores and concentrates
- Sand





Photo: South Africa



Photo: Rotterdam

Wide range of **quality services**

Our main task is to ensure that our clients' products and raw materials arrive at the right place at the right time and in the right condition. We achieve this with a flexible range of logistics services. These services are delivered by educated and experienced teams with specialized knowledge about various types of goods, international and local regulations, and, of course, customer requirements.

Steinweg's clients can rely on complete logistics support. With our years of experience, we know the ins and outs of global logistics. Each Steinweg location has its own specialization, and we have extensive knowledge and a valuable network of specialized partners. This means that we can take on any role the customer desires and do what is necessary to find a solution for every logistics challenge.



Scan for more information on our services.

- Warehousing
- Cleaning
- Collateral Management
- Crushing
- Value Added Services
- Stevedoring
- Shipping Agency
- Screening
- Packing
- Ocean Freight
- Freight Services
- Forwarding
- Customs Clearance
- Chartering
- Rail



Working at Steinweg

At Steinweg there is always a place for talented personnel. Our people are the driving force behind our logistics services. We operate in a challenging international environment with clients worldwide. For our clients, we are a significant partner in the logistics supply chain. We can only fulfill that promise with the right people.

Steinweg is a dynamic organization. Every day, we deal with a wide range of logistics challenges. It is a dynamic process, with constantly changing environmental conditions and collaboration with various external partners. The work at Steinweg is incredibly diverse, from port work and forwarding to administration and management.

What binds us together is an open company culture. We are internationally oriented, customer-focused, loyal, and team players with a positive attitude.



Scan for more information about working at Steinweg.



"Hard work and self-improvement. That's typical Steinweg. Every day is different. That's what makes my work enjoyable and challenging."

Rosanne, Dockworker

Photo: Rotterdam



Steinweg Online

For our clients, we ship goods worldwide and store them in various locations. What is where? This is essential information. For both traders and suppliers, as well as for banks that analyze risks and require collateral. Steinweg Online provides real-time inventory data in a consolidated overview of our warehouses in Europe, Asia, the United States, Africa, the Middle East, and India.

Unique and innovative

Steinweg Online is a unique online service that sets us apart from other logistics partners. The functionalities, transparency, and service of Steinweg Online reflect the character of our innovative business. Robust, solid, and forward-thinking at the same time. This new online service demonstrates Steinweg's innovation power. We anticipate developments, adapt to changes, and lead in innovation.



Scan for more information on Steinweg Online.

Our 5 themes as a **logistics partner**

As a logistics partner for companies worldwide, we are committed to our relationships. We value sustainable relationships built on trust. We ensure the level of service of the Steinweg Group with five pillars: Sustainability, Health, Safety & Environment (HSE), Quality, Food safety and Security.

Sustainability

At Steinweg we believe that sustainability should be integral to everything we do. As a global organization we understand and accept our responsibility to reduce greenhouse gas emissions and contribute to a low carbon economy. However, our commitment goes beyond this. Our commitment also extends to workers safety, supporting local communities, and maintaining strong governance practices. By integrating these principles into every aspect of our business, we strive to create a positive impact, all for a better and more sustainable future.

Health, Safety and Environment

Everyone has the right to a safe and healthy working environment. To ensure a safe and healthy working environment for everyone working for or with us, we focus on risk identification, risk minimization, and a safe corporate culture.

"Customers appreciate the high standards we set for safety."

Djina, HSE Manager



Quality

Precision and care are crucial in our work as a logistics partner. That is why we continually invest in the best people and technology. Quality assurance is a dynamic process that requires constant attention and improvement.

Food safety

At Steinweg, we understand the sensitivity of working with raw materials and food. We understand the risks associated with each type of food, country, and service. Strict procedures ensure the safe processing of food.


Security

We take security very seriously, both for the goods that we handle and the security of our people. Each country has its own security policy that considers local threats and risks. We guarantee that security with the necessary certifications.



Check the website for
contact information for
the nearest Steinweg
location.

 C. Steinweg Group HQ
Parmentierplein 1
3088 GN Rotterdam
The Netherlands

 +31-10-4879555

 info@nl.steinweg.com

 www.steinweg.com

C. Steinweg Group corporate brochure



C. Steinweg Group